



High Definition Audio Driver User's Manual

Rev. 1.00

Index

Getting Started.....	1
1. Sound Effect	3
1.1 Environment Simulation	3
1.2 Equalizer Selection	3
1.3 Frequently Used Equalizer Setting	4
2. Mixer	7
2.1. Playback control	7
2.2. Recording control	9
3. Audio I/O.....	11
3.1. Speaker Configuration	12
3.1.1. S/PDIF	14
3.2. Speaker Calibration	15
4. Microphone	17
4.1. Noise Suppression	17
4.2. Acoustic Echo Cancellation	18

5. 3D Audio Demo	19
6. Information	21
7. Appendix	23
7.1. How to Set Up Multi-Streaming Playback.....	23
7.2. How to Do Recording	23

Figure Index

Figure 0-1 System tray icon	1
Figure 1-1 Sound effect	3
Figure 2-1 Mixer.....	7
Figure 2-2 Playback control @ Mixer.....	7
Figure 2-3 Playback tool @ Mixer.....	8
Figure 2-4 Recording control @ Mixer in ALC882	9
Figure 2-5 Recording tool @ Mixer	10
Figure 3-1 Audio I/O.....	11
Figure 3-2 Connected device.....	12
Figure 3-3 Speaker configuration setting when wrong device plugged in	12
Figure 3-4 Global connector settings	13
Figure 3-5 S/PDIF Settings	14
Figure 4-1 Microphone.....	17
Figure 5-1 3D Audio Demo	19
Figure 6-1 Information.....	21



Getting Started

After Realtek HD Audio Driver being installed, “Realtek HD Audio Manager” icon will show in System tray as below. Double click the icon and the control panel will pop out.

Figure 0-1 System tray icon



Double click to enable
Realtek HD Audio Manager



1.Sound Effect

To click “Sound Effect” tab, 3 clusters “Environment”, and “Equalizer” are available for selection.



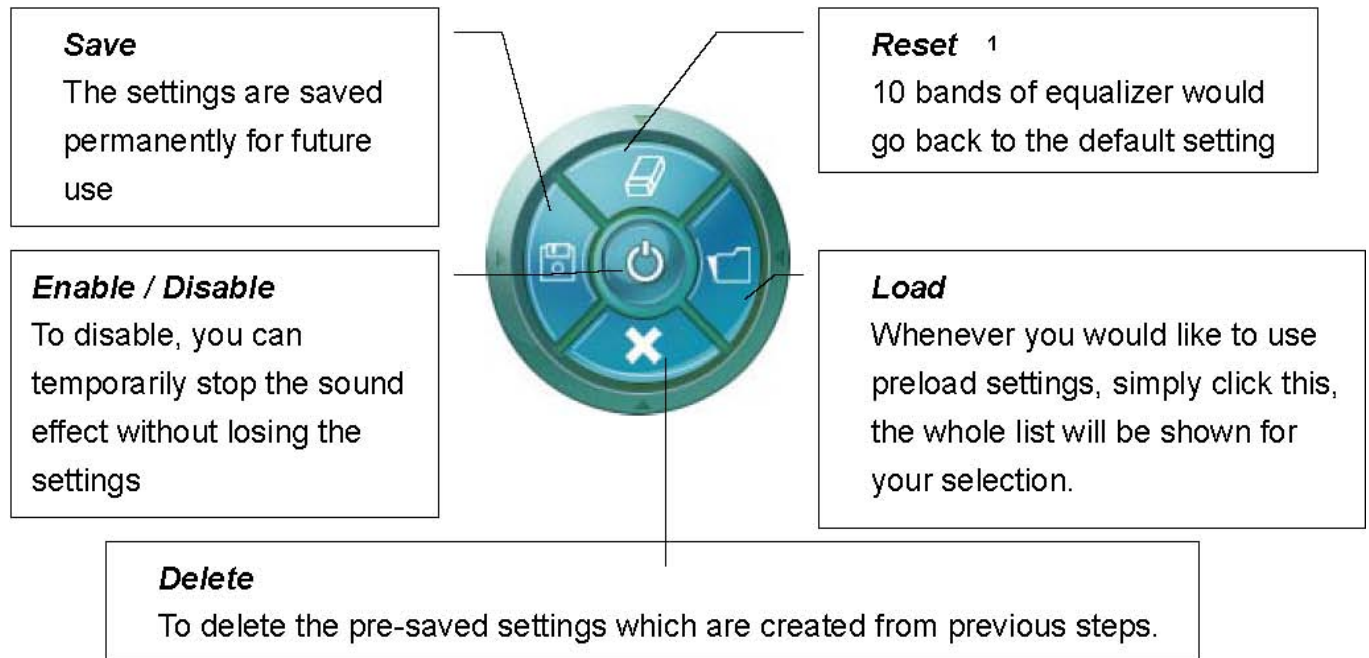
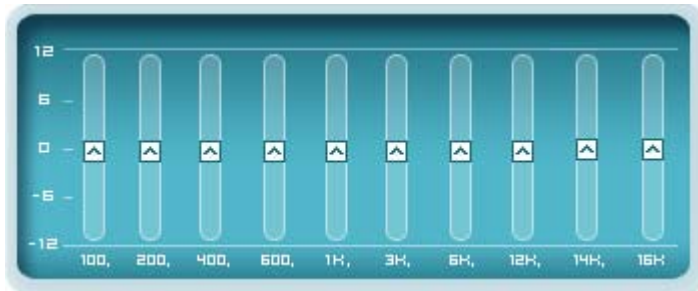
1.1 Environment Simulation

You will be able to enjoy different sound experience by pulling down the arrow, totally 23 kinds of sound effect will be shown for selection. Realtek HD Audio Sound Manager also provides five popular settings “Stone Corridor”, “Bathroom”, “Sewer pipe”, “Arena” and “Audio Corridor” for quick enjoyment.

1.2 Equalizer Selection

Equalizer frees users from default settings; users may create their own preferred settings by utilizing this tool.

10 bands of equalizer, ranging from 100Hz to 16KHz



1.3 Frequently Used Equalizer Setting

¹ You won't be losing your customized settings by clicking "reset"

Realtek recognizes the needs that you might have. By leveraging our long experience at audio field, Realtek HD Audio Sound Manager provides you certain optimized equalizer settings that are frequently used for your quick enjoyment.

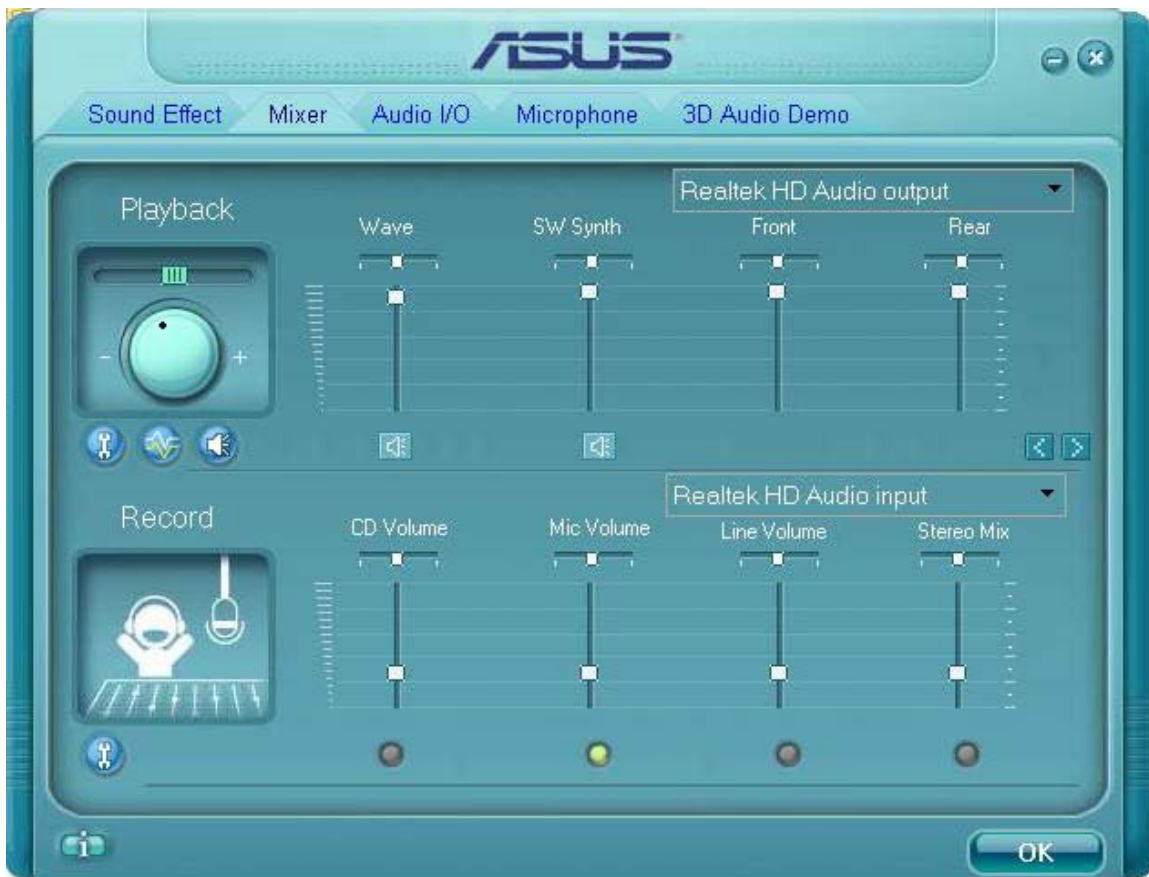
[How to Use It]

Other than the buttons “Pop” “Live” “Club” & “Rock” shown on the page, to pull down the arrow in “Others” , you will find more optimized settings available to you.

2. Mixer

Realtek HD Audio Sound Manager integrates Microsoft's "Volume Control" functions into the Mixer page. This makes it possible to you to create your favorite sound effect via a single one tool.

Figure 2-1 Mixer



2.1. Playback control

Figure 2-2 Playback control @ Mixer



(from right to left)

- ✓ Mute
- ✓ Tool

Playback device

This function is to let you freely decide which ports to output the sound. And this is essential when multi-streaming playback enabled.

- ✓ Realtek HD Audio Rear Output
- ✓ Realtek HD Audio Front Output

Mute

You may choose to mute single or multiple volume controls or to completely mute sound output.

Tool

Show the following volume control This is to let you freely decide which volume control items to be displayed, total 13 items to be chosen.

Advanced controls

Enable playback multi-streaming³ With this function, you will be able to have an audio chat with your friends via headphone (stream 1 from front panel) while still have music (stream 2 from back panel) in play. At any given period, you can have maximum 2 streams operating simultaneously.

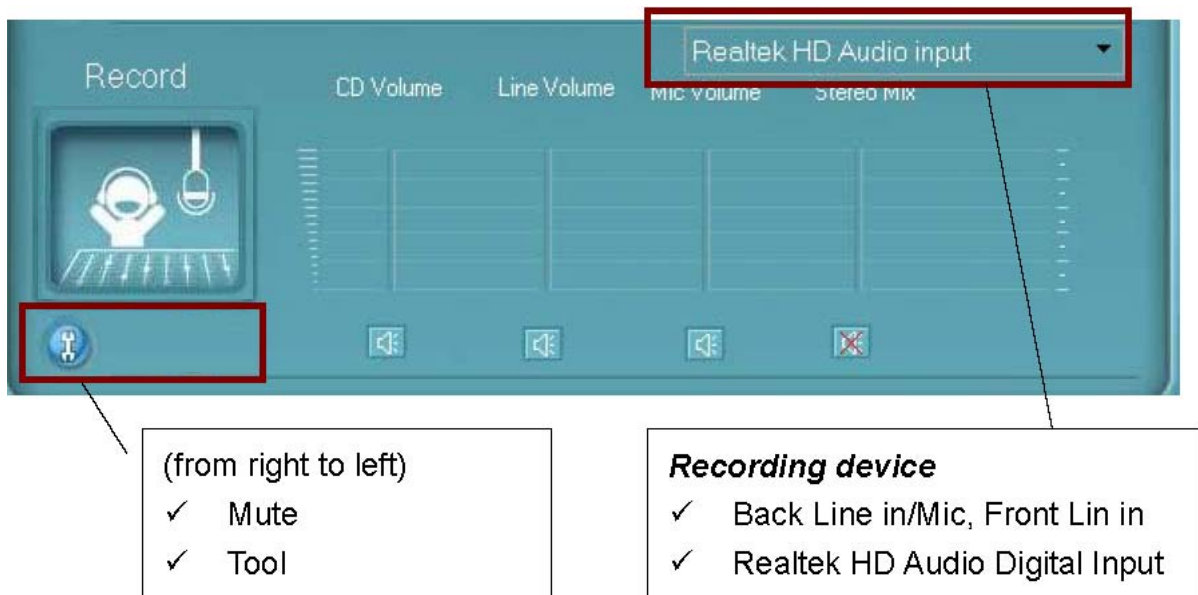
Figure 2-3 Playback tool @ Mixer

² Realtek HD Audio Front Output will only be visible after multi-streaming playback is being enabled

³ Please refer to the Appendix 9.1 to learn how to set up "multi-streaming" playback.



2.2. Recording control



4 Realtek HD Audio Digital In will only be visible if your system are equipped with port S/PDIF Input

Mute

You may choose to mute single or multiple volume controls or to completely mute sound output.

Tool

- ✓ Show the following volume controls

This is to let you freely decide which volume control items to be displayed.

Advanced controls.

Advanced control is a “Microphone Boost” icon.

Once this item is checked, you will find “advanced” icon beside “Front Pink In” & “Mic Volume”. With this, the input signal into “Front Pink In” & “Mic Volume” will be strengthened.⁵

- ✓ Enable recording multi-streaming

At any given period, you can have maximum 2 streams operating simultaneously.

Figure 2-5 Recording tool @ Mixer



⁵ Once “Microphone Boost” enabled, all sound, including what you would like to record or background noise will be strengthened. To achieve better recording quality, you may try to enable “Microphone boost” along with improvement functions provided at “Microphone” page.

3. Audio I/O

Realtek HD Audio Manager frees you from default speaker settings. Different from before, for each jack, they are not limited to perform certain functions. Instead, now each jack is able to be chosen to perform either output (i.e. playback) function or input (i.e. Recording) function, we call this “Retasking”.

Audio I/O aims to help you set jacks right. Moreover, other than blue to blue, pink to pink, the way that you used to do, Audio I/O would guide you to other right jacks that can also serve as microphone / speaker / headphone.

Figure 3-2 Connected device



6 Retasking function varies from each motherboard. You may find not every jack is re-taskable. Please read your system manual to learn which jacks support retasking function.

3.1. Speaker Configuration

Step 1: Plug in the device in any available jack.

Step 2: Dialogue “connected device” will pop up for your selection. Please select the device you are trying to plug in. (As Figure 3-2)

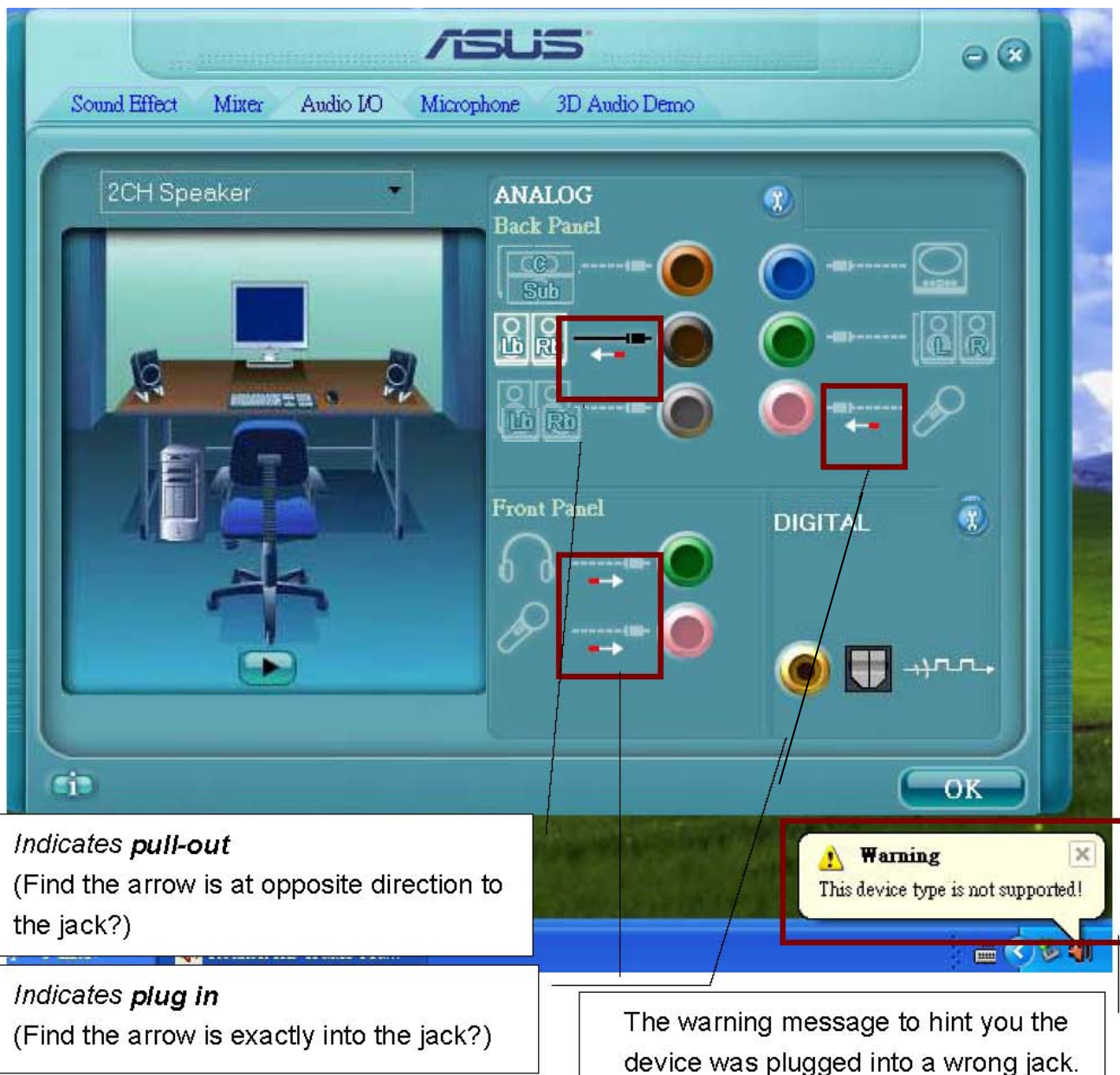
- If the device is being plugged into the correct jack, you will be able to find the icon beside the jack changed to the one that is same as your device.
- If not correct, Realtek HD Audio Manager will guide you to plug the device into the correct jack. (As Figure 3-3)

Figure 3-2 Connected device



Figure 3-3 Speaker configuration setting when wrong device plugged in⁷

⁷ In the case that your system supports retasking function for all ports, the warning dialogue “The device type is not supported” will not be shown. Check on your system guide to learn which ports support retasking function.



3.1.1. S/PDIF

Short for **Sony/Philips Digital Interface**, a standard audio file transfer format. S/PDIF allows the transfer of digital audio signals from one device to another without having to be converted first to an analog format. Maintaining the viability of a digital signal prevents the quality of the signal from degrading when it is converted to analog.

Figure 3-5 S/PDIF Settings



- ✓ Output Sampling Rate
 - 44.1KHz: This is recommend while playing CD
 - 48KHz: This is recommended while playing DVD or Dolby.
 - 96KHz: This is recommended while playing DVD-Audio.
- ✓ Output Source
 - Output digital audio source: The digital audio format (such as .wav, .mp3,.midi etc) will come out through S/PDIF-Out.

8 Check on your PC system to see if S/PDIF connectors are available.

3.2. Speaker Calibration

If you have successfully plugged speakers in the right jacks, congratulations, you are only one more step to go to enjoy the intended sound. We provide “Speaker Calibration” to help you check if the speakers are located in the correct position.

**Step1**

Select the channel output (headphone / 2 / 4 / 6 / 8 channel)

Step2

Click “play” icon

Step3

Look at the scene; while the speaker appears flashing, you should be able to hear the sound exactly from that direction.

4. Microphone

This page is designed to provide you better microphone / recording quality.

Below picture indicates both “Noise Suppression” & “Acoustic Echo Cancellation” are both enabled.

Figure 4-1 Microphone



4.1. Noise Suppression

Feel background noise, especially the sound generated from the fan inside PC, is too loud? Try “Noise Suppression”, you will find the difference⁹

⁹ Noise suppression aims to reduce the noise which appears non-fluctuant and continuously, such as the operating sound generated by fan, PC, or some other electrical devices

4.2. Acoustic Echo Cancellation

This function prevents playback sound from being recorded by microphone together with your sound. For example, you might have chance to use VOIP function through Internet with your friends. The voice of your friend will come out from speakers (playback). However, the voice of your friend might also be recorded into your microphone then go back to your friend through Internet. In that case, your friend will hear his/her own voice again. With AEC(Acoustic Echo Cancellation) enabled at your side, your friend can enjoy the benefit with less echo.

5. 3D Audio Demo

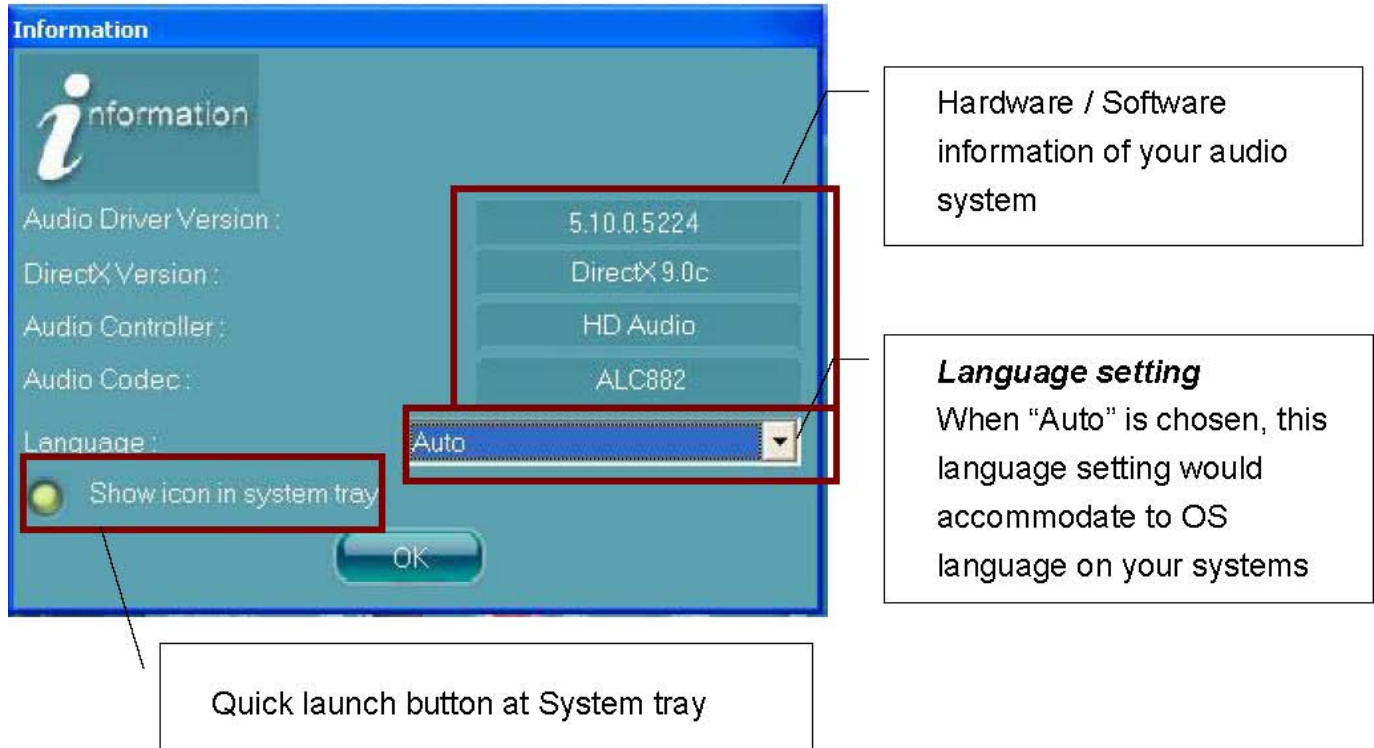
Page “3D Audio Demo” gives you another fun to enjoy your system. Try it to feel sound bumping to ear in an extraordinary way.

Figure 5-1 3D Audio Demo



6. Information

Figure 6-1 Information



7. Appendix

7.1. How to Set Up Multi-Streaming Playback

Example: MSN or Skype talk with friends while CD is still in play in PC.

Before set up, please make sure the playback devices are well plugged in the jacks.

- i. Enable playback multi-streaming (Mixer Tool Check "Enable playback multi-streaming")
- ii. Check the item "Update Playback Device Automatically" (Mixer Tool Check "Update Playback Device Automatically")
- iii. At Mixer page, choose " Realtek HD Audio Rear Output"
- iv. Launch Media player to play CD. At this moment, CD will be played back from back-panel.
- v. Go back to "Mixer" page, to choose "Realtek HD Audio Front Output".
- vi. Turn on Skype or MSN audio to do "audio" chat with friends. At this moment, you will be able to hear your friends' talk from front panel output (say, via headphone), while music (back-panel) is still in play.
- vii. At the end, you should hear 2 different sound playback simultaneously without interference.

7.2. How to Do Recording

I. Audio input source selection

At recording section of the Mixer tab, select the following audio source from the drop down list,

- ✓ Mic in / Line in
- ✓ Realtek HD Audio Digital In

In the case that Mic in / Line in is being selected, you have following audio channels

to be recorded.

■ ALC882 allows you to record the following channels simultaneously, frees you from mixing efforts. At any given period, the recording channels can be up to 4.

■ ALC880 / ALC260: At any given period, you may choose 1 of following 4 channels to record.

- ✓ CD player
- ✓ Line in
- ✓ Microphone
- ✓ Stereo Mix

Please make sure to un-mute the audio channels that you intend to record.

II. Volume adjustment

Simply adjust the volume wheel for volume control.

III. Launch “Sound Recorder”

Start Programs Accessories Entertainment Sound Recorder

IV. Single click on “record” button and enjoy your time.