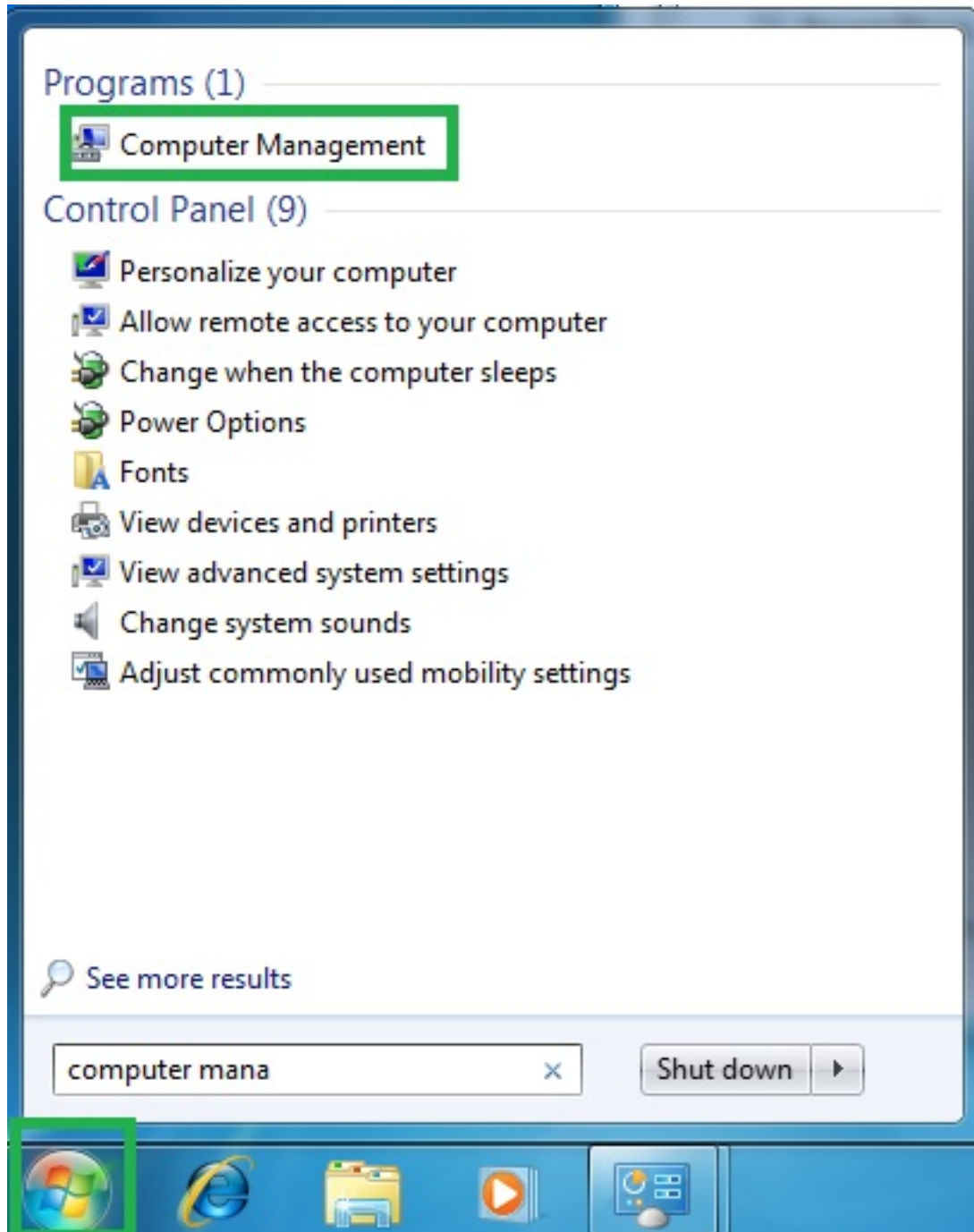


# malfunction

## How do I partition a hard disk?

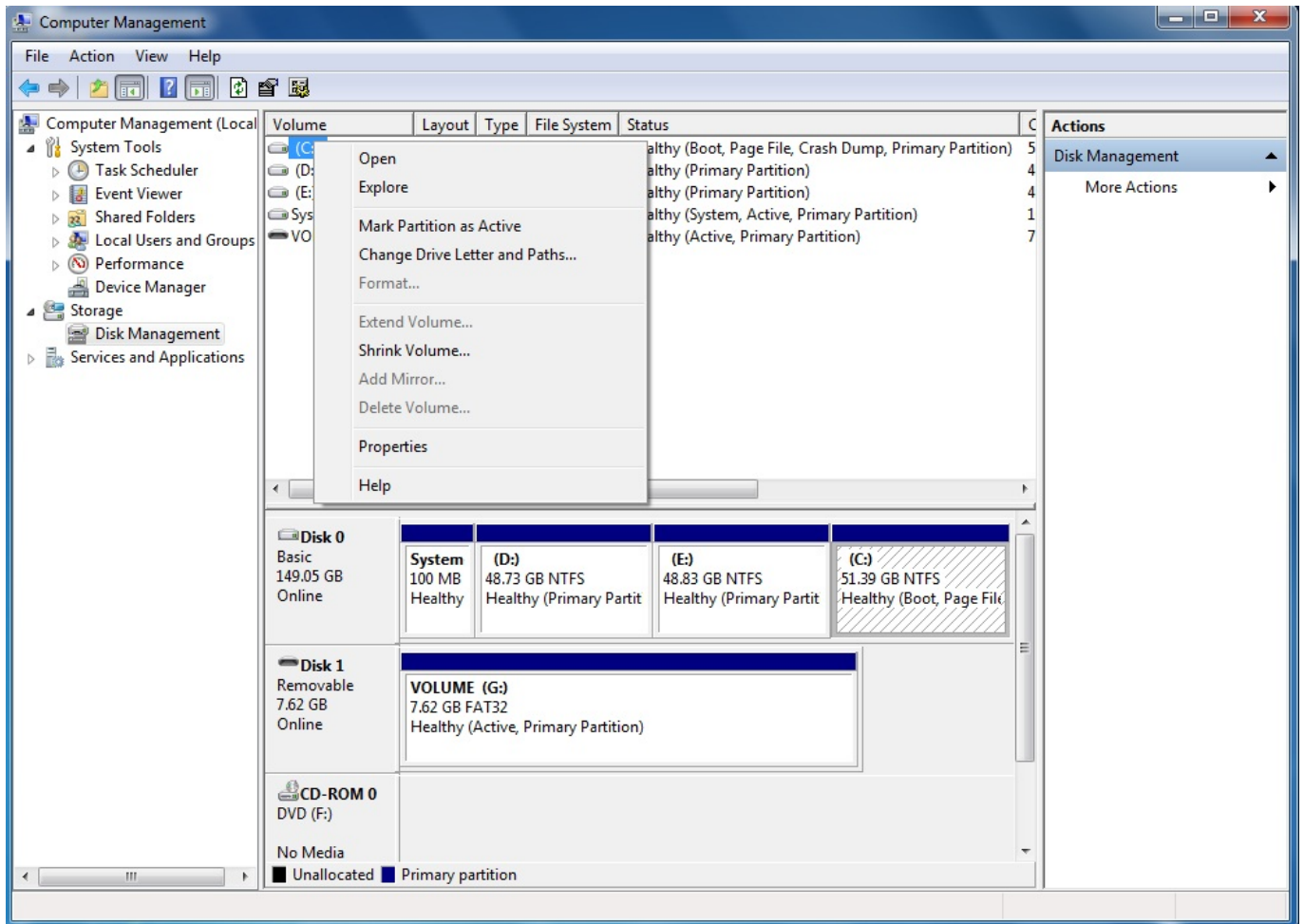
Please follow the instructions below to partition your hard disk:

Please do a leftclick on the Windows-Start-Button and type in the word "computer management". Open the application "Computer Management" (first result in search-list):



Click on the entry "Disk Management" on the left side to show all data carrier.

# malfunction



Right-click on the hard disk you want to partition. In the appearing menu, you have the possibility to set up the data carriers according to your wishes.

Please back up all the data that is on the affected disk before partition it.

Unique solution ID: #2671

Author:

Last update: 2017-03-30 15:57